

CAR AUDIO | 2020

 **FOCAL**[®]
LISTEN BEYOND



We, Focal,
strive to create sound
equipment that honours the artist's
musical creation and empowers you to
feel a new dimension of the music. We want
every nuance to be revealed with precision and
purity. To do this, we push the limits of the current
boundaries in sound technology, and go beyond
the traditional approach thinking differently.
With Focal, let the sound thrill your senses
until you go beyond the usual perception
of music and discover new fields
of emotion.

LISTEN BEYOND

“ THE AMPLIFIED DRIVING EXPERIENCE ”



For four decades, Focal has been applying its unique sound signature to speaker drivers and high-end loudspeakers. We are renowned worldwide for our innovations which have given birth to exclusive technologies, and some of our loudspeakers have gone on to become world-renowned references.

Our philosophy is to promote our expertise made in France: 100% of our products are designed and developed by our engineers, and a large part of our collections are made in France in our own workshops. All Focal products benefit from innovations which result from the on-going research in the field of acoustics. This technological heritage, protected by numerous patents, ensures a sound which is clear, powerful and true to nature; for providing the best audio systems in each category.

Our passion for music combined with our passion for cars led to the Car Audio Collection that launched in the 90s. Focal offers audio systems and kits for lovers of beautiful cars, to unite the pure pleasure of driving with the love of sound and music. From the most prestigious custom installation to kits to fit in your car, the solutions are always optimized for your vehicle. Our technology brings together the best innovations and materials to enhance the sound environment and make your journey an intensely pleasurable experience.

Innovation and performance, the highest levels of expertise and pleasure are the brand's values. They define Focal's signature, whose unique goal is to take you beyond sound. Listen Beyond.

CAR AUDIO

The birth of the Car Audio division in the 90s allowed Focal to offer a Hi-Fi sound to music and car enthusiasts, uniting the pleasure of driving with that of a pure sound.

For us, innovation means pushing the boundaries of what's possible. That's why we are constantly playing with the mobile environment around us, and as a result are developing our range of kits. Thanks to the meticulous work of our engineers, we are achieving this and always expanding our offers. Our aim is to offer you high-performance products that are aesthetically pleasing and easy to install. Whether a custom creation with Utopia M, our flagship line, or an Access kit offering strategic price positioning, we devote the same care to the manufacturing of every single speaker driver.

Inspired by the very best Focal technologies, the **Utopia M** line and its Beryllium tweeter deliver acoustic quality that is quite simply exceptional... All wrapped up in finishes that take on the ultimate high-end Hi-Fi design codes.

Discover the performance of the iconic yellow cone, the emblem of sportiness, dynamics and power. With its 'M'-shaped aramid-fibre inverted dome tweeter and its 'push-pull' motor, the **K2 Power** line is in a league of its own.

Equipped with a flax cone, the new **Flax Evo** line embodies the quest for sound performance, combined with meticulous aesthetics. The sandwich is made of glass fibre and flax, a harmonious union of rigidity, weight and damping, for an acoustic rendering that is as sharp as it is powerful.

Forget your existing audio system: treat yourself to a fresh sound, with defined midranges thanks to the **Polyglass** kits. Named after the cone that characterises it, the Polyglass line has already proven its worth.

Access brings you closer to the ultimate in Focal innovation with its exclusive DFS cone, robust and reliable. Access audio kits offer high performance and strategic price positioning.

Compatible with a wide range of vehicles, quick and easy to install, **Universal** kits deliver a detail-rich and powerful sound without altering the aesthetics of your car's cabin. Leaving you to simply take pleasure in the listening experience.

The young generation will also find with the **Auditor** line the Focal sound expertise at a very affordable budget. The design and select technologies will provide the perfect audio accompaniment to enhance the driving experience.

01
02
03
04
05
06
07

UTOPIA
'À la carte' concept

K2 POWER
More than products, a lifestyle!

FLAX EVO
The perfect balance

POLYGLASS
A winning combination

ACCESS
Accessible Focal technology

UNIVERSAL
An optimal compatibility

AUDITOR
Your first installation with Focal sound

AND ALSO
Subwoofers, electronics, accessories...

UTOPIA

MADE IN
FRANCE

'À la carte' concept

For years, the Utopia range has been a myth for all music and car lovers. It has become a benchmark thanks to our unique technologies.

With our rich history and strong DNA, we set ourselves a huge challenge: to renew the range and establish a new reference of high-end drivers in the market.

And thus Utopia M was born, the quintessence of our expertise and our latest patented technologies.

Utopia M is an innovative, 'à la carte' concept, that lets you build your own bespoke system depending on your vehicle, the only limit being your creativity and that of the installer fitting it. When devising its unique design, a mix of tradition and innovation, our designers drew on the codes and richness of French architecture.

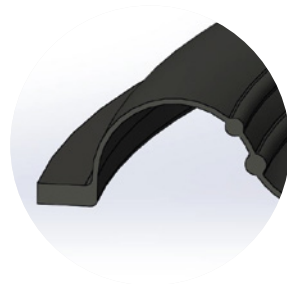
This work was possible thanks to the development of our patented 'M'-profile 'W' sandwich cone, which pushes the boundaries by perfectly combining the 3 criteria essential for creating the ideal driver: rigidity/lightness/damping.

In combination with our patented TMD® surround, distortion is reduced, thus increasing the precision and realism of the midrange. Our Beryllium tweeter also benefits from these innovations and includes an 'M'-shaped inverted dome combined with our TMD® surround, which provides a striking level of detail.

With Utopia M, the legend continues...



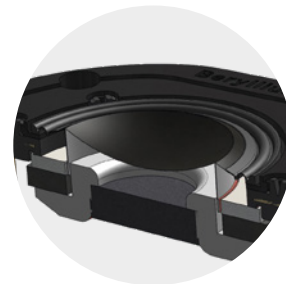
> 'M'-profile 'W' sandwich cone



> TMD® Surround (Tuned Mass Damper)



> Red neodymium motor



> 'M'-shaped Beryllium dome and TMD® Surround





	TBM	6WM	3.5WM
• Type	Tweeter	Woofer	Midrange
• Diameter	-	6½" (165mm)	3½" (87.5mm)
• Cone	'M' shape pure Beryllium dome	'M'-profile 'W'	'M'-profile 'W'
• Surround technology	Tuned Mass Damper (TMD*)	Tuned Mass Damper (TMD*)	Tuned Mass Damper (TMD*)
• Motor	Neodymium	Neodymium	Neodymium
• Mounting depth	5/16" (9mm)	2" (51.5mm)	1¼" (31mm)
• Voice coil diameter	1" (25mm)	3½" (80mm)	1¾" (45mm)
• Voice coil height	1/16" (1.8mm)	5/16" (15.5mm)	5/16" (8mm)
• Impedance	4Ω	4Ω	4Ω
• Max. power	200W	200W	100W
• Nom. power	20W RMS	100W RMS	50W RMS
• Sensitivity (2.83V/1m)	95dB	91.5dB	88dB
• Frequency response	1.5kHz - 50kHz	60Hz - 6kHz	200Hz - 10kHz
• Accessories	Supplied mounting brackets	Optional grille	Optional grille



6" grille

'M'-shaped design
Aluminium ring

Sold separately by unit



3.5" grille

'M'-shaped design
Aluminium ring

Sold separately by unit



8WM

10WM

• Type	Woofer	Subwoofer
• Diameter	8" (200mm)	10" (250mm)
• Cone	'M'-profile 'W'	'M'-profile 'W'
• Surround technology	Tuned Mass Damper (TMD®)	-
• Motor	Neodymium	Neodymium
• Mounting depth	2½" (52mm)	4¾" (108mm)
• Voice coil diameter	3½" (80mm)	Dual voice coil 4¾" (120mm)
• Voice coil height	⅝" (15.5mm)	1¾" (45mm)
• Impedance	4Ω	2 x 4Ω
• Max. power	200W	800W
• Nom. power	100W RMS	400W RMS
• Sensitivity (2.83V/1m)	91.8dB	87.5dB
• Frequency response	45Hz - 5kHz	25Hz - 800Hz
• Suggested load volume	-	Sealed enclosure: 0.35 to 0.52 cu ft (10 to 15 l)
• Accessories	Optional grille	-



Grille 8"

'M'-shaped design
Aluminium ring

Sold separately by unit



Utopia wouldn't be Utopia without this new 165W-XP kit. An evolution of one of our most iconic products, which opens the door to this world and its exceptional performance. It integrates our latest technologies such as the TMD® surround, a progressive spider and a new, pure Beryllium inverted dome tweeter.



165W-XP Passive

• Type	2-way component kit
• Diameter	6½" (165mm)
• Cone	Composite 'W' sandwich
• Surround technology	Tuned Mass Damper (TMD®)
• Motor	Ferrite
• Mounting depth	2½" (74mm)
• Voice coil diameter	1¼" (32mm)
• Voice coil height	⅝" (16mm)
• Tweeter	Pure Beryllium inverted dome
• Crossover	Separated: 12/18dB bi-amp
• Adjustable tweeter level	+3; 0; -3dB/oct
• Impedance	2Ω
• Max. power	200W
• Nom. power	100W RMS
• Sensitivity (2.83 V/1 m)	93dB
• Frequency response	60Hz - 40kHz
• Accessories	Grilles included



K2 POWER

MADE IN
FRANCE

More than products, a lifestyle!

Besides its distinct yellow colour, the K2 Power line has become a lifestyle object in its own right worldwide. Once more, our engineers have pushed back the limits of performance to continue making the reputation of this extraordinary line synonymous with power and precision!

The K2 Power's composite sandwich cone combines three key features: rigidity, lightness and damping. This unique expertise 'Made in Focal' combines a new patented TMD[®] (Tuned Mass Damper) rubber surround which controls unwanted resonances to provide a clean and neutral midrange with very low harmonic distortion.

The ventilated voice coil gap keeps the temperature of the voice coil low and stable for increased power handling and reliability. The subwoofers have been designed to work in very compact volumes while having a very high SPL and an amazing energy!

Finally, the major innovation of this line made in France is the 'M'-profile aramid-fibre inverted dome tweeter. This totally exclusive 'M'-profile inverted dome tweeter has been specifically designed to increase precision in the very high frequencies. The push-pull motor inspired by the IAL technology dampens acoustic resonances on the back of the membrane and extends the low end of the frequency response, in a very compact housing.



> Aramid-fibre sandwich cone



> TMD[®] surround
(Tuned Mass Damper)



> Ventilated voice coil
cooling system



> 'M' profile inverted
dome tweeter



	EC 165 K	ES 100 K	ES 130 K	ES 165 K
• Type	2-way coaxial kit	2-way component kit	2-way component kit	2-way component kit
• Diameter	6½" (165mm)	4" (100mm)	5" (130mm)	6½" (165mm)
• Cone	K2 composite sandwich	K2 composite sandwich	K2 composite sandwich	K2 composite sandwich
• Surround technology	Tuned Mass Damper (TMD®)	Tuned Mass Damper (TMD®)	Tuned Mass Damper (TMD®)	Tuned Mass Damper (TMD®)
• Motor	Ferrite	Neodymium	Ferrite	Ferrite
• Mounting depth	2½" (74mm)	1¾" (39mm)	2¾" (60.4mm)	2½" (74mm)
• Voice coil diameter	1" (25mm)	¾" (20mm)	1" (25mm)	1¼" (32mm)
• Voice coil height	¾" (15mm)	¾" (8.5mm)	½" (12mm)	¾" (15mm)
• Tweeter	TKM ('M' profile aramid-fibre inverted dome)	TKM ('M' profile aramid-fibre inverted dome)	TKM ('M' profile aramid-fibre inverted dome)	TKM ('M' profile aramid-fibre inverted dome)
• Crossover	6 dB	Separated: 12/12dB/oct	Separated: 6-12/12dB/oct	Separated: 6-12/12dB/oct
• Adjustable tweeter level	-	+3; 0; -3dB/oct	+3; 0; -3dB/oct	+3; 0; -3dB/oct
• Impedance	4Ω	4Ω	4Ω	4Ω
• Max. power	160W	120W	160W	200W
• Nom. power	80W RMS	60W RMS	80W RMS	100W RMS
• Sensitivity (2.83V/1m)	93dB	90dB	90dB	90.8dB
• Frequency response	60Hz - 22kHz	110Hz - 22kHz	65Hz - 22kHz	60Hz - 22kHz
• Suggested load volume	-	-	-	-
• Accessories	Grilles included	Grilles included	Grilles included	Grilles included

	ES 165 K2	ES 165 KX2	ES 165 KX3	E25 KX	E30 KX
• Type	2-way component kit	2-way component kit	3-way component kit	Subwoofer	Subwoofer
• Diameter	6½" (165mm)	6½" (165mm)	Woofer: 6½" (165mm) Midrange: 80mm	10" (250mm)	12" (300mm)
• Cone	K2 composite sandwich	K2 composite sandwich	K2 composite sandwich	K2 composite sandwich	K2 composite sandwich
• Surround technology	Tuned Mass Damper (TMD®)	Tuned Mass Damper (TMD®)	Tuned Mass Damper (TMD®)	-	-
• Motor	Ferrite	Ferrite	Woofer: Ferrite Midrange: Neodymium	Dual ferrite	Dual ferrite
• Mounting depth	2½" (73.9mm)	3" (75.9mm)	Woofer: 3" (75.9mm) Midrange: 1½" (33.5mm)	6¾" (172mm)	6¾" (172mm)
• Voice coil diameter	1¼" (32mm)	1¾" (40mm)	1¾" (40mm)	2¾" (65mm)	2¾" (65mm)
• Voice coil height	¾" (15.5mm)	¾" (16.5mm)	¾" (16.5mm)	2¾" (55mm)	2¾" (55mm)
• Tweeter	TKM ('M' profile aramid-fibre inverted dome)	TKMX ('M' profile aramid-fibre inverted dome)	TKMX ('M' profile aramid-fibre inverted dome)	-	-
• Crossover	Bi-amp separated: 6-12/12dB/oct	Bi-amp separated: 6-12/12-18dB/oct	Separated: 6-12/12/12dB/oct	-	-
• Adjustable tweeter level	+3; 0; -3dB/oct	+3; 0; -3dB/oct	+3; 0; -3dB/oct	-	-
• Impedance	2Ω	2Ω	4Ω	2 x 4Ω	2 x 4Ω
• Max. power	200W	240W	240W	1200W	1600W
• Nom. power	100W RMS	120W RMS	120W RMS	600W RMS	800W RMS
• Sensitivity (2.83V/1m)	92.8dB	92.5dB	93dB	84.5dB	86.5dB
• Frequency response	60Hz - 22kHz	55Hz - 22kHz	45Hz - 22kHz	25Hz - 500Hz	25Hz - 500Hz
• Suggested load volume	-	-	-	Sealed enclosure: 0.6 to 0.77 cu ft (17 to 22 l) Bass-reflex: 0.77 to 1.23 cu ft (22 to 35 l)	Sealed enclosure: 0.99 to 1.23 cu ft (28 to 35 l) Bass-reflex: 0.99 to 1.76 cu ft (28 to 50 l)
• Accessories	Grilles included	Grilles included	Grilles included	-	-

FLAX EVO

NEW

MADE IN
FRANCE

The perfect balance for high dynamic

Over recent years, many innovations have appeared in the materials field: by combining traditional natural materials with modern composites, a whole new genre of hybrid materials has emerged.

Just as our 'sandwich' technology, perfectly mastered with our 'K2' and 'W' cones, is the optimal combination of rigidity/weight/damping, flax was the engineers' obvious choice for the sandwich core. The use of an ecotextile, combined with composite technologies, provides an innovative solution for a sandwich structure: we use a very high-quality flax -French flax, considered the best in the world- and place it between two layers of glass fibre.

Manufactured in our workshops in France, the Flax cone is characterised by its very natural sound without colouration, a rich reproduction in the midrange and clear bass strokes. From the Home to the Car Audio collection, it features in many of Focal's flagship products with our Flax Evo line comprising kits with 2 and 3-way component kits, a coaxial kit, and subwoofers.

In addition to aluminium baskets, the TAM tweeter -another Focal exclusive technology developed and manufactured in our workshops- completes the range and sets itself apart through its qualities in terms of 'wide-angle' diffusion, a massive advantage for in-car installations.



3



> TAM tweeter



> TMD® Surround
(Tuned Mass Damper)



> Flax sandwich cone



> Aluminium basket



PC 165 FE

• Type	2-way coaxial kit	PS 130 FE	2-way component kit	PS 165 FE	2-way component kit
• Diameter	6½" (165mm)	5" (130mm)	6½" (165mm)		
• Cone	Flax sandwich	Flax sandwich	Flax sandwich		
• Surround technology	Tuned Mass Damper (TMD*)	Tuned Mass Damper (TMD*)	Tuned Mass Damper (TMD*)		
• Motor	Ferrite	Ferrite	Ferrite		
• Mounting depth	2⅞" (72.7mm)	2⅜" (59.7mm)	2⅞" (72.7mm)		
• Voice coil diameter	1" (25mm)	1" (25mm)	1" (25mm)		
• Voice coil height	½" (13mm)	⅜" (10mm)	⅝" (15mm)		
• Tweeter	Coaxial 'M'-profile inverted dome	TAM ('M'-profile Aluminium/Magnesium inverted dome)	TAM ('M'-profile Aluminium/Magnesium inverted dome)		
• Crossover	Integrated: 6dB/oct	Separated: 12/12dB/oct	Separated: 12/12dB/oct		
• Adjustable tweeter level	0; -3dB/oct	0; -3dB/oct	0; -3dB/oct		
• Impédance	4Ω	4Ω	4Ω		
• Max. power	140W	120W	140W		
• Nom. power	70W RMS	60W RMS	70W RMS		
• Sensitivity (2.83V/1m)	90dB	90.5dB	91.5dB		
• Frequency response	60Hz - 28kHz	75Hz - 28kHz	60Hz - 28kHz		
• Accessories	Mounting accessories, screws.	Mounting accessories, screws.	Mounting accessories, screws.		



PS 165 FSE

PS 165 FSE	PS 165 FXE	PS 165 F3E
2-way component kit	2-way component kit	3-way component kit
6½" (165mm)	6½" (165mm)	Woofer: 6½" (165mm) Midrange: 3⅝" 80mm
Flax sandwich	Flax sandwich	Flax sandwich
Tuned Mass Damper (TMD*)	Tuned Mass Damper (TMD*)	Tuned Mass Damper (TMD*)
Ferrite	Ferrite	Ferrite
2⅞" (54.5mm)	3" (77mm)	Woofer: 2⅞" (72.7mm) Midrange: 1⅝" (33.5mm)
1¼" (32mm)	1¼" (32mm)	Woofer: 1¼" (32mm) Midrange: 1" (25mm)
⅞" (11mm)	⅝" (15mm)	Woofer: ⅝" (15mm) Midrange: ⅜" (9mm)
TAM ('M'-profile Aluminium/Magnesium inverted dome)	TAM ('M'-profile Aluminium/Magnesium inverted dome)	TAM ('M'-profile Aluminium/Magnesium inverted dome)
Separated: 12/12dB/oct	Bi-amp separated: 12-18dB/oct	Separated: 12/12-18dB/oct
0; -3dB/oct	0; -3dB/oct	0; -3dB/oct
4Ω	4Ω	4Ω
120W	160W	160W
60W RMS	80W RMS	80W RMS
91.5dB	90.5dB	90.5dB
70Hz - 28kHz	55Hz - 28kHz	60Hz - 28kHz
Mounting accessories, screws.	Mounting accessories, screws.	Mounting accessories, screws.





P 20 FE

• Type	Sealed box and bass-reflex subwoofer
• Diameter	8" (200mm)
• Cone	Flax sandwich
• Surround technology	-
• Motor	Dual ferrite
• Mounting depth	4 5/8" (117mm)
• Voice coil diameter	1 1/2" (38mm)
• Voice coil height	1 1/8" (28mm)
• Impedance	4Ω
• Max. power	500W
• Nom. power	250W RMS
• Sensitivity (2.83V/1m)	82.5dB
• Frequency response	39Hz - 500Hz
• Suggested load volume	Sealed enclosure: 0.35 to 0.52 cu ft (10 to 15 l) Bass-reflex: 0.35 to 0.71 cu ft (10 to 20 l)



P 20 FSE

• Type	Sealed box subwoofer
• Diameter	8" (200mm)
• Cone	Flax sandwich
• Surround technology	-
• Motor	Dual ferrite
• Mounting depth	3" (76mm)
• Voice coil diameter	1 1/2" (38mm)
• Voice coil height	1 5/16" (23mm)
• Impedance	4Ω
• Max. power	400W
• Nom. power	200W RMS
• Sensitivity (2.83V/1m)	86dB
• Frequency response	41Hz - 400Hz
• Suggested load volume	Sealed enclosure: 0.21 to 0.32 cu ft (6 to 9l)



P 25 FE

• Type	Sealed box and bass-reflex subwoofer
• Diameter	10" (250mm)
• Cone	Flax sandwich
• Surround technology	-
• Motor	Dual ferrite
• Mounting depth	5 9/16" (140.6mm)
• Voice coil diameter	2" (50mm)
• Voice coil height	1 3/8" (35mm)
• Impedance	4Ω
• Max. power	600W
• Nom. power	300W RMS
• Sensitivity (2.83V/1m)	85dB
• Frequency response	33Hz - 500Hz
• Suggested load volume	Sealed enclosure: 0.35 to 0.88 cu ft (10 to 25 l) Bass-reflex: 0.88 to 1.23 cu ft (25 to 35 l)



P 25 FSE

• Type	Sealed box subwoofer
• Diameter	10" (250mm)
• Cone	Flax sandwich
• Surround technology	-
• Motor	Dual ferrite
• Mounting depth	3" (76mm)
• Voice coil diameter	1 1/2" (38mm)
• Voice coil height	1 5/16" (23mm)
• Impedance	4Ω
• Max. power	400W
• Nom. power	200W RMS
• Sensitivity (2.83V/1m)	86dB
• Frequency response	41Hz - 400Hz
• Suggested load volume	Sealed enclosure: 0.42 to 0.64 cu ft (12 to 18 l)



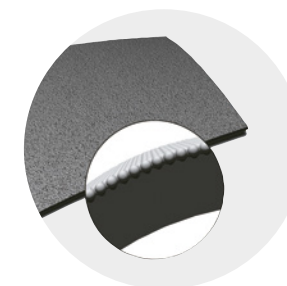
POLYGLASS

A winning combination for well-defined midranges

Over the thirty years it has been in existence, the Polyglass range has never stopped improving across the board, from concept to design. Our engineers have succeeded in creating high-quality 2-way component kits and coaxial kits that combine power, durability and compactness. Just as high-performing are our subwoofers, which can be used in sealed-box or bass-reflex form, and are a real asset to audio installations with their distinctive bass sounds.

The Polyglass cone is the line's crowning glory. It involves applying fine glass microbeads to a cellulose pulp (paper) cone. A process that combines the paper's excellent damping with the rigidity of glass. In addition to these assets, it produces well-defined midranges and well-controlled harmonic balance.

Together, all components of the range are meticulously combined to deliver a spectacular sound and surround the passengers with warm sound that has no colouration.



> Polyglass cone



> Aluminium basket



> Butyl surround



PC 100

PC 130

PC 165

• Type	2-way coaxial kit	2-way coaxial kit	2-way coaxial kit
• Diameter	4" (100mm)	5" (130mm)	6½" (165mm)
• Cone	Polyglass	Polyglass	Polyglass
• Motor	Ferrite	Ferrite	Ferrite
• Mounting depth	2" (51.5mm)	2¼" (56.5mm)	2⅝" (65.5mm)
• Voice coil diameter	1" (25mm)	1" (25mm)	1" (25mm)
• Tweeter	Rotating Aluminium inverted dome	Rotating Aluminium inverted dome	Rotating Aluminium inverted dome
• Crossover	Integrated: 6dB/oct	Integrated: 6dB/oct	Integrated: 6dB/oct
• Adjustable tweeter level	-	-	-
• Impedance	4Ω	4Ω	4Ω
• Max. power	100W	120W	160W
• Nom. power	50W RMS	60W RMS	80W RMS
• Sensitivity (2.83V/1m)	90.9dB	91.6dB	93.6dB
• Frequency response	100Hz - 20kHz	80Hz - 20kHz	60Hz - 20kHz
• Suggested load volume	-	-	-
• Accessories	Grilles included	Grilles included	Grilles included



PS 165 V1

SUB P 25 DB

SUB P 30 DB

2-way component kit	Subwoofer	Subwoofer
6½" (165mm)	10" (250mm)	12" (300mm)
Polyglass	Polypropylene	Polypropylene
Ferrite	5⅛" (145mm)	5⅛" (145mm)
2⅝" (65.5mm)	5⅞" (138.6mm)	6⅞" (160.5mm)
1" (25mm)	Dual voice coil: 2" (50mm)	Dual voice coil: 2⅜" (60mm)
Aluminium inverted dome	-	-
Separated: 6/12dB/oct	-	-
+3; 0; -3dB/oct	-	-
4Ω	4Ω	4Ω
160W	500W	600W
80W RMS	250W RMS	300W RMS
92.5dB	90.9dB	93.4dB
60Hz - 20kHz	42Hz - 500Hz	27Hz - 500Hz
-	Sealed enclosure: 0.52 to 1.23 cu ft (15 to 35 l) Bass-reflex: 1.23 to 2.12 cu ft (35 to 60 l)	Sealed enclosure: 0.88 to 1.59 cu ft (25 à 45 l) Bass-reflex: 1.23 to 2.12 cu ft (35 to 60 l)
Grilles included	-	-

ACCESS

Accessible Focal technology

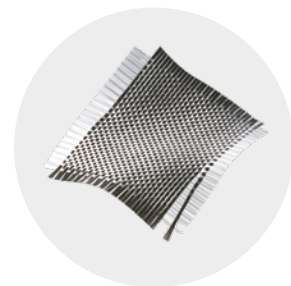
Access invites all drivers to experience Focal innovation and quality. With its established style and technical quality, this emblematic line prioritises performance: you are guaranteed the full experience of Focal technology in your car.

Power handling, the drop down into the bass and acoustics remain the common denominators across the Access range. The DFS (Dual Fiberglass Structure) cone is robust and reliable. The glass fibre is woven at 90° and sealed with a polyurethane coating, allowing it to be used in extreme acoustic and climatic conditions...

Access is more than a name; it's an unrivalled and world-renowned story. This complete line -2-way and 3-way component kits or 2-way coaxial kits can be combined with two subwoofers for renewed acoustic subtlety in your car- continues to offer what has always been its strength: unrivalled performance and strategic price positioning.



> Profiled grilles



> DFS* cone



> Reinforced ABS basket





100 AC

130 AC

165 AC

• Type	2-way coaxial kit	2-way coaxial kit	2-way coaxial kit
• Diameter	4" (100mm)	5" (130mm)	6½" (165mm)
• Cone	DFS® (Dual Fiberglass Structure)	DFS® (Dual Fiberglass Structure)	DFS® (Dual Fiberglass Structure)
• Motor	Ferrite	Ferrite	Ferrite
• Mounting depth	2¼" (52.2mm)	2½" (54.7mm)	2½" (62.9mm)
• Voice coil diameter	1" (25mm)	1" (25mm)	1" (25mm)
• Tweeter	Rotating Aluminium inverted dome	Rotating Aluminium inverted dome	Rotating Aluminium inverted dome
• Crossover	Integrated: 6dB/oct	Integrated: 6dB/oct	Integrated: 6dB/oct
• Impedance	4Ω	4Ω	4Ω
• Max. power	80W	100W	120W
• Nom. power	40W RMS	50W RMS	60W RMS
• Sensitivity (2.83V/1m)	87.2dB	89.3dB	91dB
• Frequency response	70Hz - 20kHz	70Hz - 20kHz	60Hz - 20kHz
• Accessories	Grilles included	Grilles included	Grilles included

570 AC

690 AC

• Type	2-way coaxial kit	2-way coaxial kit
• Diameter	5 x 7" (130 x 180mm)	6 x 9" (164 x 235mm)
• Cone	DFS® (Dual Fiberglass Structure)	DFS® (Dual Fiberglass Structure)
• Motor	Ferrite	Ferrite
• Mounting depth	2¾" (59.5mm)	1¾" (30mm)
• Voice coil diameter	1" (25mm)	1¾" (30mm)
• Tweeter	Rotating Aluminium inverted dome	Rotating Aluminium inverted dome
• Crossover	Integrated: 6dB/oct	Integrated: 6dB/oct
• Impedance	4Ω	4Ω
• Max. power	120W	150W
• Nom. power	60W RMS	75W RMS
• Sensitivity (2.83V/1m)	92.8dB	91.3dB
• Frequency response	65Hz - 20kHz	50Hz - 20kHz
• Accessories	Without grilles	Grilles included



130 AS

165 AS

165 AS3

• Type	2-way component kit	2-way component kit	3-way component kit
• Diameter	5" (130mm)	6½" (165mm)	Woofer : 6½" (165mm) Midrange : 3¼" (80mm)
• Cone	DFS® (Dual Fiberglass Structure)	DFS® (Dual Fiberglass Structure)	DFS® (Dual Fiberglass Structure)
• Motor	Ferrite	Ferrite	Ferrite
• Mounting depth	2½" (54.7mm)	2½" (62.9mm)	Woofer : 2½" (62.9mm) Midrange : 1½" (42.5mm)
• Voice coil diameter	1" (25mm)	1" (25mm)	1" (25mm)
• Tweeter	Aluminium inverted dome	Aluminium inverted dome	Aluminium inverted dome
• Crossover	Separated: 12/12dB/oct (5kHz)	Separated: 12/12dB/oct (5kHz)	Separated: 6/12dB/oct (5kHz)
• Adjustable tweeter level	+3; 0; -3dB/oct	+3; 0; -3dB/oct	+3; 0; -3dB/oct
• Impedance	4Ω	4Ω	4Ω
• Max. power	100W	120W	160W
• Nom. power	50W RMS	60W RMS	80W RMS
• Sensitivity (2.83V/1m)	90dB	91.3dB	90dB
• Frequency response	65Hz - 20kHz	60Hz - 20kHz	55Hz - 20kHz
• Suggested load volume	-	-	-
• Accessories	Grilles included	Grilles included	Grilles included

25 A4

30 A4

Subwoofer	Subwoofer
10" (250mm)	12" (300mm)
DFS® (Dual Fiberglass Structure)	DFS® (Dual Fiberglass Structure)
4¾" (120mm)	4¾" (120mm)
5" (126.6mm)	5¾" (146.5mm)
Simple voice coil: 2" (50mm)	Simple voice coil: 2" (50mm)
-	-
-	-
-	-
4Ω	4Ω
400W	500W
200W RMS	250W RMS
85dB	87dB
36Hz - 500Hz	32Hz - 500Hz
Sealed enclosure: 0.52 to 0.88 cu ft (15 to 25 l) Bass-reflex: 0.71 to 1.23 cu ft (20 to 35 l)	Sealed enclosure: 0.71 to 1.06 cu ft (20 to 30 l) Bass-reflex: 0.88 to 1.23 cu ft (25 to 35 l)
-	-



UNIVERSAL

An optimal compatibility

Enjoy this line's rich sound without altering the aesthetics of your car's cabin. Special attention was paid to design and dimensions during the development stages of these kits, to ensure optimal compatibility with as many different vehicles as possible.

The impressively compact size, achieved by reducing the housing depth, and the snap-off fixings make Universal kits quick to install.

We make it a point of honour to provide you with a material of flawless quality. Universal kits are equipped with the Polyglass cone, offering a natural sound without colouration. They are the perfect partner for the Aluminium/Magnesium inverted dome tweeter, providing renewed acoustic subtlety in your vehicle, and quite simply the pleasure of listening.



> Adjustable tweeter level



> Polyglass cone



> Basket: optimized dimensions and depth



ICU 100

• Type	2-way coaxial kit
• Diameter	4" (100mm)
• Cone	Polyglass
• Motor	Ferrite
• Mounting depth	1 ⁵ / ₁₆ "(49mm)
• Voice coil diameter	1" (25mm)
• Tweeter	Aluminium/Magnesium inverted dome
• Crossover	Integrated: 6dB/oct
• Adjustable tweeter level	Flat / High
• Impedance	4Ω
• Max. power	80W
• Nom. power	40W RMS
• Sensitivity (2.83V/1m)	90.3dB
• Frequency response	90Hz - 21kHz
• Accessories	Without grilles



ICU 130

• Type	2-way coaxial kit
• Diameter	5" (130mm)
• Cone	Polyglass
• Motor	Ferrite
• Mounting depth	1 ⁵ / ₁₆ "(48.9mm)
• Voice coil diameter	1" (25mm)
• Tweeter	Aluminium/Magnesium inverted dome
• Crossover	integrated: 6dB/oct
• Adjustable tweeter level	Flat / High
• Impedance	4Ω
• Max. power	120W
• Nom. power	60W RMS
• Sensitivity (2.83V/1m)	91.8dB
• Frequency response	90Hz - 21kHz
• Accessories	Without grilles



ICU 165

• Type	2-way coaxial kit
• Diameter	6 ¹ / ₂ " (165mm)
• Cone	Polyglass
• Motor	Ferrite
• Mounting depth	1 ⁵ / ₁₆ "(48.4mm)
• Voice coil diameter	1" (25mm)
• Tweeter	Aluminium/Magnesium inverted dome
• Crossover	Integrated: 6dB/oct
• Adjustable tweeter level	Flat / High
• Impedance	4Ω
• Max. power	140W
• Nom. power	70W RMS
• Sensitivity (2.83V/1m)	93dB
• Frequency response	60Hz - 21kHz
• Accessories	Without grilles



ICU 570

• Type	2-way coaxial kit
• Diameter	5 x 7" (130 x 180mm)
• Cone	Polyglass
• Motor	Ferrite
• Mounting depth	2 ⁵ / ₁₆ " (59.3mm)
• Voice coil diameter	1" (25mm)
• Tweeter	Aluminium/Magnesium inverted dome
• Crossover	Integrated: 6dB/oct
• Adjustable tweeter level	Flat / High
• Impedance	4Ω
• Max. power	140W
• Nom. power	70W RMS
• Sensitivity (2.83V/1m)	94dB
• Frequency response	60Hz - 21kHz
• Accessories	Without grilles



ICU 690

• Type	2-way coaxial kit
• Diameter	6 x 9" (164 x 235mm)
• Cone	Polyglass
• Motor	Ferrite
• Mounting depth	3 ⁵ / ₁₆ " (83.5mm)
• Voice coil diameter	1" (25mm)
• Tweeter	Aluminium/Magnesium inverted dome
• Crossover	Integrated: 6dB/oct
• Adjustable tweeter level	Flat / High
• Impedance	4Ω
• Max. power	160W
• Nom. power	80W RMS
• Sensitivity (2.83V/1m)	93.6dB
• Frequency response	55Hz - 21kHz
• Accessories	Grilles included



ISU 130

ISU 165

ISU 200

ISU 690

TWU 1.5

• Type	2-way component kit	2-way component kit	2-way component kit
• Diameter	5" (130mm)	6½" (165mm)	8" (200mm)
• Cone	Polyglass	Polyglass	Polyglass
• Motor	Ferrite	Ferrite	Ferrite
• Mounting depth	1½⁄₁₆" (48.9mm)	1½⁄₁₆" (48.4mm)	2½" (63.5mm)
• Voice coil diameter	1" (25mm)	1" (25mm)	1" (25mm)
• Tweeter	Aluminium/Magnesium inverted dome	Aluminium/Magnesium inverted dome	Aluminium/Magnesium inverted dome
• Crossover	Integrated (connectors): 6dB/oct	Integrated (connectors): 6dB/oct	Integrated (connectors): 6dB/oct
• Adjustable tweeter level	Car/Display	Car/Display	Car/Display
• Impedance	4Ω	4Ω	4Ω
• Max. power	120W	140W	160W
• Nom. power	60W RMS	70W RMS	80W RMS
• Sensitivity (2.83V/1m)	91.8dB	93dB	93dB
• Frequency response	90Hz - 21kHz	60Hz - 21kHz	40Hz - 21kHz
• Accessories	Tweeter support Crossovers in line on connectors Supplied without grille	Tweeter support Crossovers in line on connectors Supplied without grille	Tweeter support Crossovers in line on connectors Supplied without grille

• Type	2-way component kit	Tweeter
• Diameter	6 x 9" (164 x 235mm)	1½⁄₁₆" (49.4mm)
• Cone	Polyglass	Aluminium/Magnesium inverted dome
• Motor	Ferrite	Neodymium
• Mounting depth	3¾⁄₁₆" (83.5mm)	1½⁄₁₆" (16.75mm)
• Voice coil diameter	1" (25mm)	1¾⁄₁₆" (20mm)
• Tweeter	Aluminium/Magnesium inverted dome	-
• Crossover	Integrated (connectors): 6dB/oct	Integrated: 6dB/oct
• Adjustable tweeter level	Car/Display	Car/Display
• Impedance	4Ω	4Ω
• Max. power	160W	100W
• Nom. power	80W RMS	15W RMS
• Sensitivity (2.83V/1m)	93.6dB	94dB
• Frequency response	55Hz - 21kHz	4kHz - 21kHz
• Accessories	Tweeter support Crossovers in line on connectors Supplied without grille	4 possibilities: "Flush", surface, tilted mounting. in factory location

AUDITOR

Your first installation with Focal sound

Comprising 5 coaxial kits, 2 component kits and 2 subwoofers, the Auditor line presents Focal's full DNA in terms of technology and sound, all within a limited budget.

These audio kits integrate the Focal inverted dome tweeter, one of our stand-out innovations. It offers excellent spatialisation, a very wide soundstage and provides sound quality that is unrivalled at this price point.

Discover new musical sensations with Auditor kits in multiple possible configurations, all along the lines of the flagship kit: the 165 AS, which stands out thanks to its high sensitivity and can be connected directly to a car radio.

The tweeter level can be adjusted between three positions for optimal listening comfort. The accessories supplied with the tweeter allow multiple mounting options to achieve the best possible sound image!

The gold standard of this line is a world-renowned best-seller.



> Mylar inverted dome tweeter



> Polypropylene cone



> U-shaped surround





	RCX-100	RCX-130	RCX-165	RCX-570
• Type	2-way coaxial kit	2-way coaxial kit	2-way coaxial kit	2-way coaxial elliptic kit
• Diameter	4" (100mm)	5" (130mm)	6½" (165mm)	5 x 7" (130 x 180mm)
• Cone	Polypropylene	Polypropylene	Polypropylene	Polypropylene
• Motor	Ferrite	Ferrite	Ferrite	Ferrite
• Mounting depth	1½" (48.2mm)	2½" (54.5mm)	3¾" (86mm)	2¾" (60mm)
• Voice coil diameter	1" (25mm)	1" (25mm)	1" (25mm)	1" (25mm)
• Tweeter	1" Mylar inverted dome	1" Mylar inverted dome	1" Mylar inverted dome	1" Mylar inverted dome
• Crossover	6db/oct	6db/oct	6db/oct	6db/oct
• Impedance	4Ω	4Ω	4Ω	4Ω
• Max. power	60W	100W	120W	120W
• Nom. power	30W RMS	50W RMS	60W RMS	60W RMS
• Sensitivity (2.83V/1m)	88dB	90dB	91.5dB	91.6dB
• Frequency response	80Hz - 21kHz	65Hz - 21kHz	60Hz - 21kHz	60Hz - 21kHz
• Suggested load volume	-	-	-	-
• Accessories	Supplied with grilles, fastening and screws	Supplied with grilles, fastening and screws	Supplied with grilles, fastening and screws	Supplied without grille

	RCX-690	RSE-130	RSE-165	RSB-250	RSB-300
• Type	3-way coaxial elliptic kit	2-way component kit	2-way component kit	Subwoofer	Subwoofer
• Diameter	6 x 9" (164 x 265mm)	5" (130mm)	6½" (165mm)	10" (250mm)	12" (300mm)
• Cone	Polypropylene	Polypropylene	Polypropylene	Polypropylene	Polypropylene
• Motor	Ferrite	Ferrite	Ferrite	Ferrite	Ferrite
• Mounting depth	3¾" (80.5mm)	2½" (54.5mm)	3¾" (86mm)	4½" (117mm)	5½" (142mm)
• Voice coil diameter	1¾" (35mm)	1" (25mm)	1" (25mm)	Dual voice coil: 2" (50mm)	Dual voice coil: 2" (50mm)
• Tweeter	1" Mylar inverted dome tweeter/midrange	1" Mylar inverted dome	1" Mylar inverted dome	-	-
• Crossover	6db/oct	Separated pre-wired: 12dB/oct	Separated pre-wired: 12dB/oct	-	-
• Impedance	4Ω	4Ω	4Ω	2 x 4Ω	2 x 4Ω
• Max. power	160W	100W	120W	500W	600 W
• Nom. power	80W RMS	50W RMS	60W RMS	250W RMS	300W RMS
• Sensitivity (2.83V/1m)	92dB	90dB	91.5dB	88dB	90dB
• Frequency response	50Hz - 21kHz	65Hz - 21kHz	60Hz - 21kHz	35Hz - 500Hz	30Hz - 500Hz
• Suggested load volume	-	-	-	Sealed enclosure: 0.71 to 1.06 cu ft (20 to 30 l)	Sealed enclosure: 1.061 to 1.41 cu ft (30 to 40 l)
• Accessories	Supplied with grilles, fastening and screws	Supplied with grilles, fastening and screws	Supplied with grilles, blinding and screws	-	-

AND ALSO...

FOR A COMPLETE SOLUTION

To combine with and complement your installation, we also provide subwoofers, amplifiers and cables to create a complete audio system.

With our **subwoofers**, whether passive or active, bass-reflex, ultra flat and/or amplified, you enjoy the full benefit of the power and dynamics of the bass. Easy to install, these Focal subwoofers also feature many settings, so you can always find better listening comfort and finer sound nuances as you travel.

To experience the sensations of a precise but controlled and stable sound in your car, Focal **electronics** have it all. Create the type of architecture you're looking for, as compact as you need it to be: the audio processing chain can be optimized with digital signal processing and one or more amplifiers.

Accessories and cables play a key role in your audio architecture. With Hilo.V3, we provide solutions for any amplification scenario so that you can get the best from your system. They also optimize connections between components: the car radio, electronics and acoustics. They guarantee a high-quality, secure installation.

D1

SUBWOOFERS

D2

ELECTRONICS

D3

CABLES & ACCESSORIES

01 SUBWOOFERS

4 enclosures, 4 ways of obtaining intense bass and power.

PSB 200 is compact and easy-to-use, offering stunning performance thanks to the 250W of its subwoofer.

Bomba BP 20 is a bass-reflex box with a moulded vent to reduce air circulation noise. With its integrated Class D amplifier, this 2-in-1 enclosure takes up minimum space while offering a great bass level that is both tight and powerful.

A unique concept of an amplified subwoofer connected to a 2-channel amplifier, the **Ibus 2.1** boosts the bass and adds power to your system.

With its integrated amplifier, **Ibus 20** is ready to go. Easy to install, you simply connect the HP outputs from your radio using the 'Plug & Play' ISO cable provided.



PSB 200

• Type	Compact passive subwoofer enclosure
• Woofer diameter	8" (200mm)
• Impedance	4Ω
• Max. power	250W
• Nom. power	150W RMS
• Sensitivity (2.83V/1m)	83dB
• Frequency response	45Hz - 150Hz
• Accessories	Screws, fixation system
• Weight	15.7lbs (7kg)
• Dimensions (L x H x W)	19¼ x 4¾ x 12" (109 x 489 x 304mm)



BOMBA BP 20



IBUS 20



IBUS 2.1

• Type	Compact active subwoofer enclosure Class D amplifier High and low level audio input (OEM and aftermarket head units compatibility)	Active enclosure with subwoofer	Active enclosure with subwoofer True 2.1 system 1 amplifier for the subwoofer 1 amplifier for the front channels very high power
• Woofer diameter	8" (200mm)	8" (200mm)	8" (200mm)
• Sub max. power	300W	150W	150W
• Sub nom. power	150W RMS	75W RMS	75W RMS
• Frequency response	20Hz - 125Hz	45Hz - 150Hz	45Hz - 150Hz
• Speaker max. power	-	-	2 x 110W RMS
• Speaker nom. power	-	-	2 x 55W RMS
• Frequency response	-	-	55Hz - 55kHz
• Function	Bandpass technology Phase selector : 0 - 180° Adjustable frequency cut off : 45Hz - 120Hz	High-level inputs Autopower ON	High-level inputs Autopower ON Amplification 2 front channels
• Accessories	-	Remote & Plug & Play wiring	Remote & Plug & Play wiring
• Weight	24.4lbs (11kg)	-	-
• Dimensions (H x l x P)	17¾ x 9¼ x 12¼" (249 x 439 x 323mm)	2¼ x 13¾ x 9¼" (71.5 x 344 x 250mm)	2¼ x 13¾ x 9¼" (71.5 x 344 x 250mm)

IY BUS

Only one remote to control the sound level of the two Ibus enclosures (Ibus 20/2.1)

Supplied with cables



2 ELECTRONICS

Thanks to our **FPX** and **FDS** amplifier ranges, you'll immediately find your balance between power, versatility, compactness and audio quality.



FPX



FDS

	FPX 5.1200	FPX 4.400 SQ	FPX 4.800
• Type	Premium Class D Amplifier - 5 channels	Premium Class AB Amplifier - 4/3/2 channels Sound Quality	Premium Class D Amplifier - 4/3/2 channels
• CEA Power (4Ω)	4 x 75W RMS + 1 x 420W RMS	4 x 70W RMS	4 x 120W RMS
• Max. power (2Ω)	4 x 120W RMS + 1 x 720W RMS	4 x 100W RMS	4 x 185W RMS
• Max. power (1Ω)	-	-	-
• Max. power (bridged 4Ω)	2 x 240W RMS + 720W RMS	2 x 200W RMS	2 x 370W RMS
• Crossovers	Configurable High-Pass / Low-Pass: 50Hz - 500Hz	Configurable High-Pass / Low-Pass: 50Hz - 5000Hz	Configurable High-Pass / Low-Pass: 50Hz - 500Hz
• Copy mode	6CH/4CH/2CH	4CH/2CH	4CH/2CH
• Functions	Full range Mode Bass Boost Subsonic filter	Full Range	Full Range
• Phase adjustment	Yes	-	-
• Protections	Short circuit / Over-current / Reverse polarity /DC / Voltage drop / Heat protection	Short circuit / Over-current / Reverse polarity /DC / Voltage drop / Heat protection	Short circuit / Over-current / Reverse polarity /DC / Voltage drop / Heat protection
• Accessories	Remote control, screws, fuses	Screws, fuses, terminal board tools	Screws, fuses, terminal board tools
• Weight	9lbs (4.1kg)	8.2lbs (3.7kg)	4.4lbs (2kg)
• Dimensions (D xW x H)	11 ³ / ₁₆ x 6 ⁷ / ₈ x 2 ¹ / ₄ " (300 x 175 x 57mm)	12 ³ / ₈ x 6 ⁷ / ₈ x 2 ¹ / ₄ " (314 x 175 x 57mm)	9 ⁵ / ₁₆ x 5 ³ / ₁₆ x 2 ¹ / ₁₆ " (237 x 132 x 53mm)

	FPX 1.1000	FDS 4.350	FDS 1.350	AP-4340
	Premium Class D Amplifier - Mono	Class D Amplifier - 4/3/2 channels	Class D Amplifier - Mono - RCA low-level inputs	Class AB Amplifier 4/3/2 channels RCA inputs
	1 x 420W RMS	4 x 58W RMS	1 x 210W RMS	4 x 70W RMS
	1 x 700W RMS	4 x 100W RMS	1 x 350W RMS	4 x 95W RMS
	1 x 1000W RMS	-	-	-
	-	2 x 200W RMS	-	2 x 190W RMS
	Configurable Low-Pass: 50Hz - 250Hz	Configurable High-Pass / Low-Pass: 40Hz - 400Hz	Low-Pass: 40Hz - 400Hz	High-Pass (channel 1-2): 60Hz - 1.2kHz High-Pass (channel 3-4): 100Hz-2.2kHz Low-Pass : 50 - 250Hz
	-	-	-	-
	Bass Boost (6/12dB) Crossover subsonic (10Hz - 50Hz)	Full Range	Bass Boost (0/6dB/12dB)	Full Range
	Progressive	-	Progressive (0 - 180°)	-
	Short circuit / Over-current / Reverse polarity /DC / Voltage drop / Heat protection	Short circuit / Over-current / Reverse polarity /DC / Voltage drop / Heat protection	Short circuit / Over-current / Reverse polarity /DC / Voltage drop / Heat protection	-
	Remote control, screws, fuses, terminal board tools	Screws, fuses	Screws, fuses	-
	5.6lbs (2.55kg)	1.9lbs (850g)	1.9lbs (850g)	-
	11 ¹ / ₁₆ x 5 ³ / ₁₆ x 2 ¹ / ₁₆ " (297 x 132 x 53mm)	7 ¹³ / ₁₆ x 4 ¹ / ₄ x 1 ¹ / ₁₆ " (199 x 108 x 43mm)	7 ¹³ / ₁₆ x 4 ¹ / ₄ x 1 ¹ / ₁₆ " (199 x 108 x 43mm)	13 ³ / ₈ x 2 x 9 ¹ / ₄ " (340 x 50 x 235mm)



Manager Focal FSP-8 software

PC compatibility: Windows XP/Vista/Seven/8/10
Simplified set-up and dynamic help
Equaliser: 10 bands, fully customisable for every single channel
High-pass/low-pass filter/bandpass control: 16Hz - 20kHz
Delay adjustment range: 0-22ms per channel
Delay adjustment incrementation: 0.1ms
Phase inverter



[NB : This pen is not for sale. It only indicates scale.]

IMPULSE 4.320

• Type	Class D ultra-compact Amplifier - 4/3/2 channels
• CEA power (4Ω)	4 x 55W RMS
• Max. power (2Ω)	4 x 80W RMS
• Max. power (4Ω bridged)	2 x 160W RMS
• Crossovers	Activable/deactivable fixed at 75Hz on channels 1/2 Configurable from 40Hz-200Hz on channels 3/4
• Copy Mode	4 CH/2CH
• Setting	Adjustable Phase 0/180° on channels 3/4
• Protections	Short circuit / Over-current / Reverse polarity / DC / Voltage drop / Heat protection
• Weight	1.2lbs (550g)
• Dimensions (L x H x l)	6 7/8 x 1 7/8 x 2 5/8" (175 x 47 x 66.5mm)



IY - AC IMPULSE 4.320

Adapter Y cable - Focal Impulse 4.320
 ISO standard
 Easy Plug & Play installation
 Length: 1m
 No soldering or modification of your original system
 ISO standard compatible



HILO V3

• Type	High-level to RCA line stereo converter
• Function	Converts a stereo amplified signal in two low-level line outputs for an amplifier DC and AC detection modes Automatic remote output Speaker simulation network to avoid head-unit muting.
• Bandwith (+/-1dB)	10Hz - 140kHz
• Signal/Noise ratio	100dB
• Distorsion	< 0.01 %

FSP-8

• Type	8-channel sound processor
• Inputs	Selectable high/low-level inputs for compatibility with factory or after-market head units High-resolution digital input (24 bits/192kHz) Auxiliary stereo input
• Max output (with 10 kΩ)	3.4 V
• Frequency response	Digital crossover OFF/-3 dB: 5Hz- 21kHz
• Signal/Noise ratio	-90dBA (analog input) -99dBA (optical)
• Distortion - 10 kΩ - @ 1kHz (with 22kHz Low-Pass filter)	0.02 %
• Accessories	Remote control with LED screen (sold separately)
• Dimensions (L x H x W)	5 5/8" x 8 3/8" x 1 7/8" (135 x 218 x 48mm)



FSP-8 remote control

Enables you to control the main functions of the FSP-8: Adjust overall gain, subwoofer volume, and input selection for the FSP-8
 Reminds you of the stored pre-sets
 Notched knob
 LED backlit screen
Dimensions (LxHxW): 1 1/2" x 4 3/8" x 1 1/4" (38x110x31.3mm)

3 CABLES & ACCESSORIES



PK8

8 AWG Complete supply kit
(Amplifier-speakers)
16ft (4.9m) supply cable (8.3mm²)
3.3ft (1m) ground cable (8.3mm²)
32.8ft (10m) speaker cable
16.4ft (5m) remote cable
16.4ft (5m) RCA cable
(2x90° bent plugs and 2 straight plugs)
60A fuse-box
Accessory pack

PK21

4AWG Complete supply kit
(Amplifier-speakers)
16ft (4.9m) supply cable (21mm²)
3.3ft (1m) ground cable (21mm²)
32.8ft (10m) speaker cable
16.4ft (5m) remote cable
16.4ft (5m) RCA cable
(2x90° bent plugs and 2 straight plugs)
80A fuse-box
Accessory pack

ER1

RCA cable
1 x 1m (3.3ft)

ER3

RCA cable
1 x 3m (9.9ft)

ES15

1 roll: 15 AWG
12m x 1.5mm²
(39ft)

ES25

1 roll: 13 AWG
12m x 2.5mm²
(39ft)

PR5

RCA cable
5m (16.4ft)
Male/male plugs
2 x 90° bent plugs
for difficult locations

PS15

Flat speaker cable.
15 AWG/1.5mm²
High performances, easy to install.
Soft touch insulant.
Roll: 39ftx15 AWG
(12mx1.5mm²)

PS25

Flat speaker cable.
13 AWG/2.5mm²
High performances, easy to install.
Soft touch insulant.
Roll: 39 ft x 13 AWG
(12mx2.5mm²)

ER5

RCA cable
1 x 5m (16.4ft)

EY05

RCA cable
2 x 0.5m (2 x 1.64ft)



B.A.M.

3 technical materials, 3 strategic functions

This acoustic insulation kit is completing and essential to a quality car audio installation. From its use depends optimum acoustic rendering of speakers, amplifiers and installed accessories. Technical materials made of honeycombed damping material, an aluminum sheet and a viscoelastic complex (Butyl).

B.A.M. XXXL

1 roll of 19¹/₁₆ x 236¹/₄" (50x600cm) (3m²)



B.A.M. XL

1 sheet 19¹/₁₆"x78³/₄"
(50x200cm) (1m²)

Tool Set

Set of 11 composite tools to remove door panel.
The complementary product for quality car audio installations without risk of aesthetic damage.



FOCAL[®] INSIDE

Focal Inside is an offer for all drivers who want access to quality, custom Plug & Play solutions that are perfectly suited to their vehicle. From the 'simplest' kit to the most complete amplified system, the Focal Inside offer is quick and easy to install in place of the original system, without modifying the environment.

Our offer covers more than 20 car manufacturers and is compatible with over 200 vehicles. To guide you in your choice of audio system, we have developed a dedicated website. By selecting your vehicle model and desired level of customisation, you can build your sound experience and configure the solution best suited to your requirements, in just a few clicks.



Check your vehicle compatibility on:

www.focal-inside.com

For more information about Focal Inside, refer to the Focal Inside catalog.



RENAULT



SUBARU



DS AUTOMOBILES



CITROËN



TOYOTA



SCION



LEXUS



RENAULT-SAMSUNG



DACIA

smart



OPEL



VW



SEAT



ISUZU



NISSAN



LADA

ŠKODA



PEUGEOT



HARLEY-DAVIDSON
COMPANY

classic loudspeakers



custom install



car audio



headphones & multimedia



studio monitors



FOCAL

Focal-JMlab* - BP 374 - 108, rue de l'Avenir - 42353 La Talaudière cedex - France - +33 (0) 477 435 700

Focal® is a registered trademarks of Focal-JMlab®. Non-binding pictures. Photos L'Atelier Sylvain Madelon. SCAA190919/1 - PC1310
Due to constant technological advances, Focal-JMlab® reserves its right to modify prices and specifications without notice.



GB
September 2019