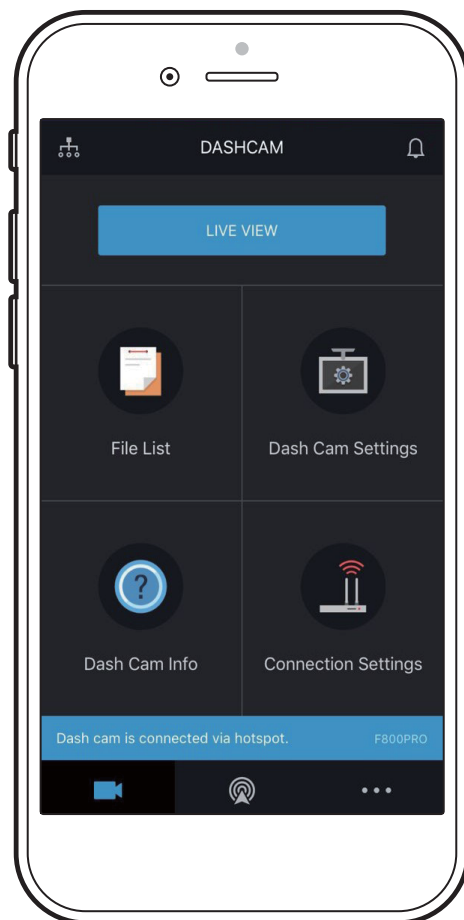


Dashboard Camera

**THINKWARE**

# Cloud Service



---

# Using cloud service

As long as the dash cam is connected to Internet via Hotspot, you can view your vehicle's location, download driving impact videos, receive notifications when entering and departing Geo-Fenced zones, and when a driving impact is detected.



## Important Notice for Users on Android 7.0 and later

### App Menu

If the Data saving and Power saving modes are enabled on your smartphone, update your permission settings for the Thinkware Cloud Application to run. Failure to allow the Thinkware Cloud Application to run on both modes causes the dash cam to disconnect from the hotspot connection.

These permissions can be found under the application settings of your Android smartphone. On your smartphone settings, tap **Special Access**, and enable the Power saving or Optimize battery usage modes and the Data Saver or Unrestricted Data Access modes.

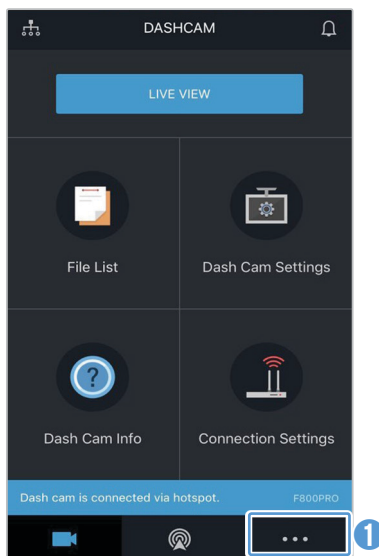
Under these modes, allow the Thinkware Cloud Application to run so that the Hotspot connection does not time out during operation.

## Logging to the THINKWARE account

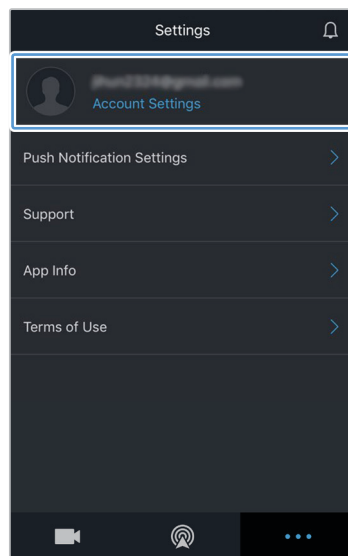
You must log in to the THINKWARE account to use the cloud service. Follow the instructions to log in to the THINKWARE account.



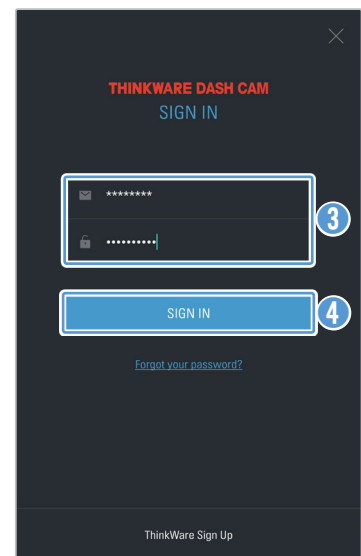
- If you do not have an ID, select **ThinkWare Sign Up** on the **SIGN IN** screen, and create an account first.
- Only one Thinkware Account can be registered to a F800PRO. If you wish to change the registered account you will have to delete the account that is registered via the Thinkware Cloud App. Then you are able to register a different Thinkware account to the F800PRO. To do this, user must call Thinkware CS.



1 Tap **...**.



2 Tap **SIGN IN**.

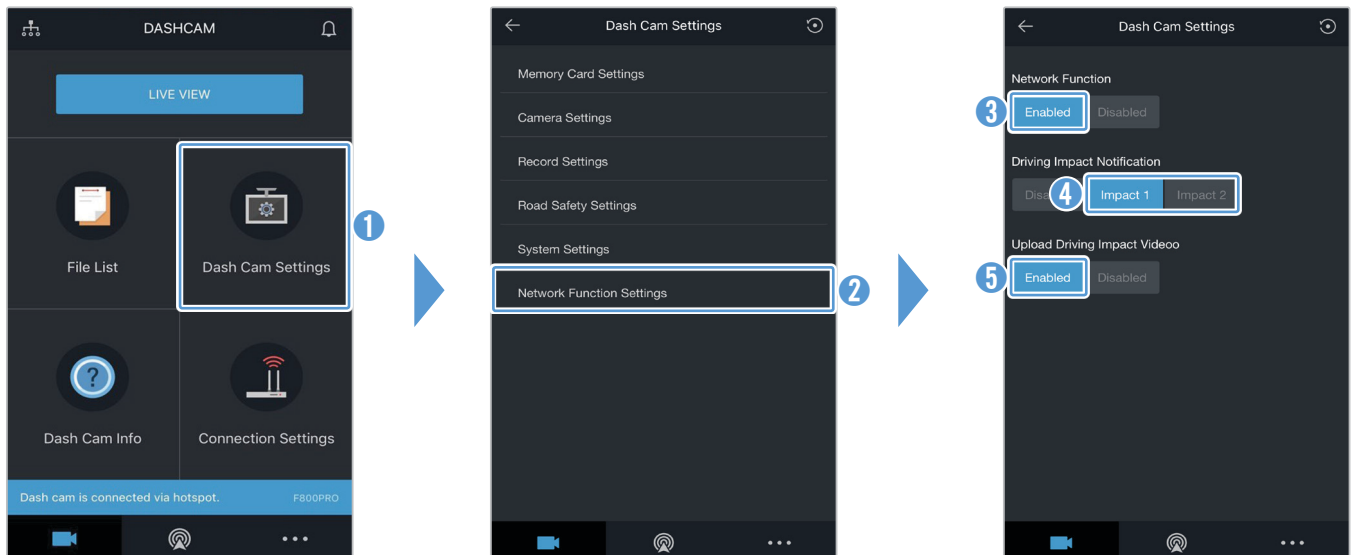


3 Enter your ID and the password.

4 Tap **SIGN IN**.

## Enabling Network Function Settings

You must enable the network function settings to use the cloud service. Follow the instructions to enable the network functions.



1 Tap **Dash Cam Settings**.

2 Tap **Network Function Settings**.

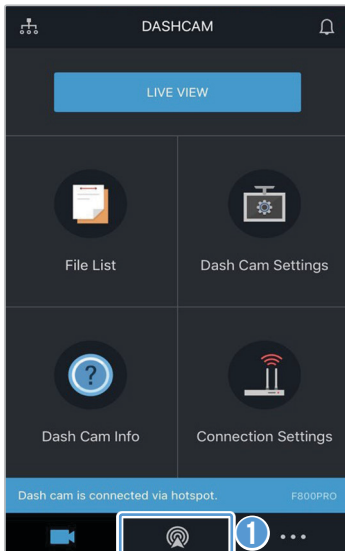
3 Enable **Network Function**.  
4 Select either **Impact 1** or **2**.  
5 Enable **Upload Driving Impact Video**.



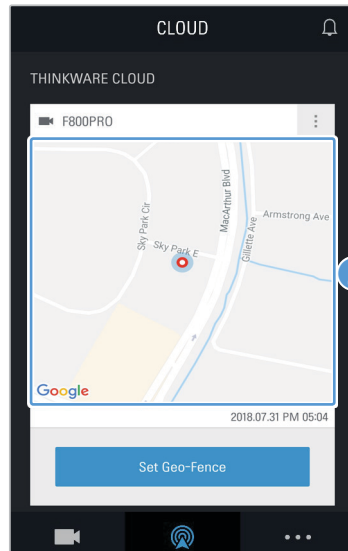
**Impact 1** sets the g-sensor to 3G and **Impact 2** sets the g-sensor to 4G. While you are driving, and the g-sensor is triggered, it sends an impact notification and shortly after, it also sends the driving impact footage notification, if enabled.

## Locating the vehicle

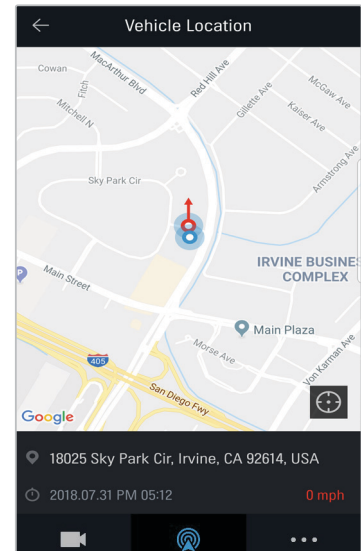
The cloud service receives GPS information from your product and displays the location of your vehicle. Follow the instructions to locate your vehicle.



1 Tap .



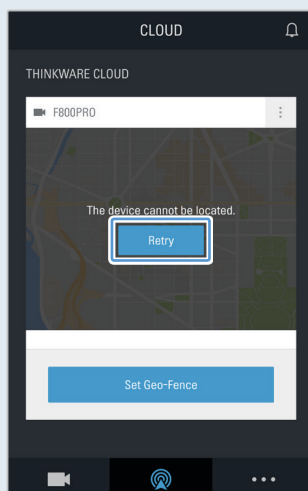
2 Your mobile phone's location is marked on the map. Tap the map to confirm your vehicle's location on the map.



3 Your vehicle's location and direction is marked on the map. The last GPS information reception date and time are also displayed.



- The location automatically refreshes every 10 seconds.
- If the cloud service failed to receive GPS information from the product or if you are using the cloud service for the first time, the following screen appears. Tap **Retry** to attempt to receive GPS information again.

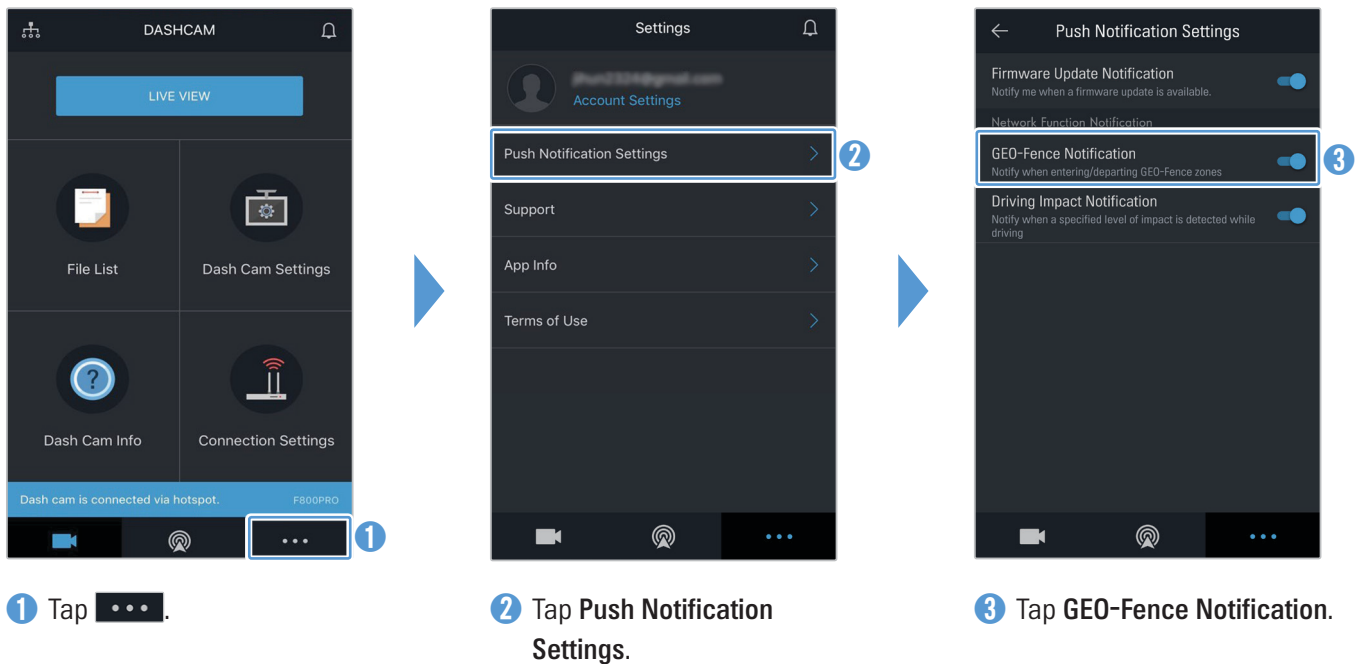


## Setting a Geo-Fence

You can receive notifications when your vehicle enters or departs from the Geo-Fenced zone.

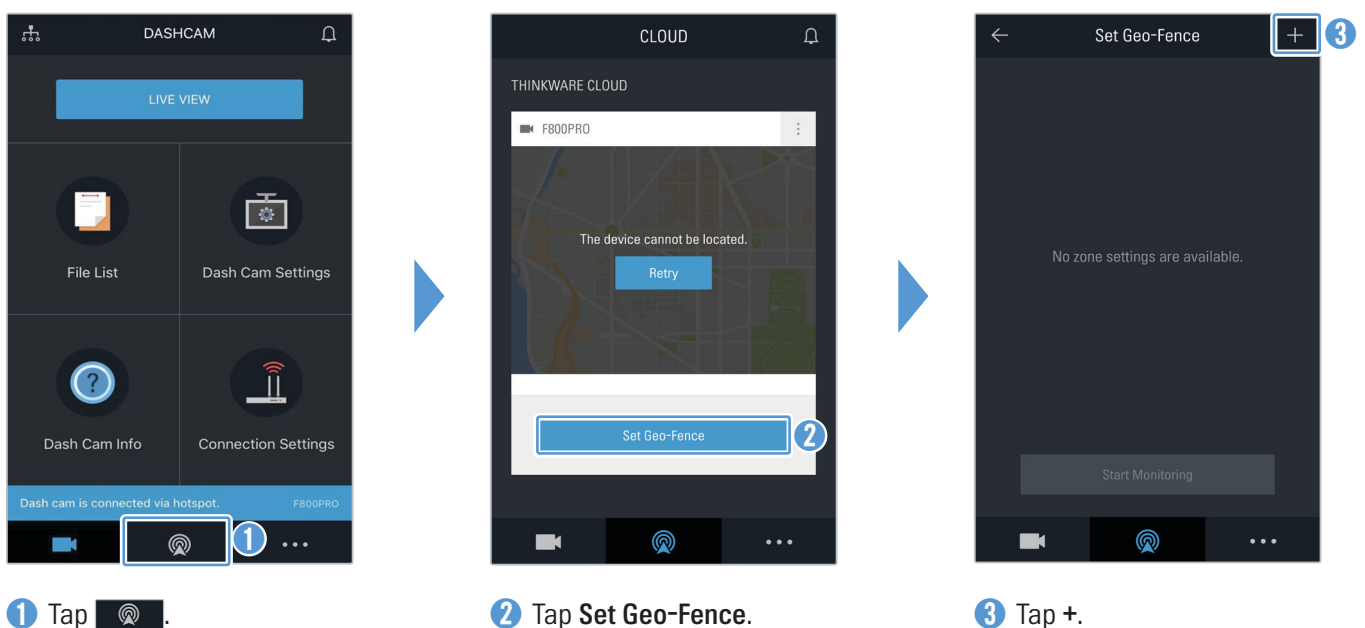
### Turning on the Geo-Fence notification

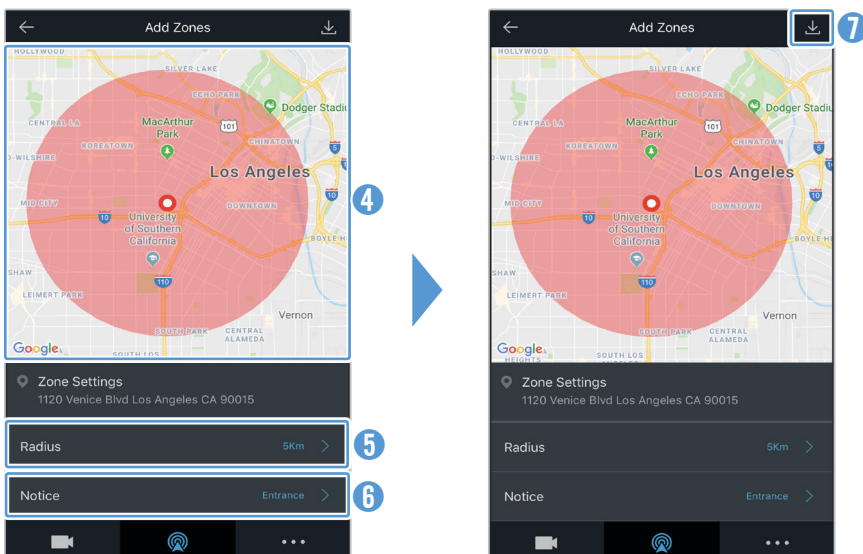
Follow the instructions to turn on the Geo-Fence notification.



### Adding a Geo-Fence zone

Follow the instructions to add a Geo-Fence zone.





- 4 Tap the desired location on the map.
- 5 Tap **Radius** and select a distance.
- 6 Tap **Notice** and select when to receive notifications.

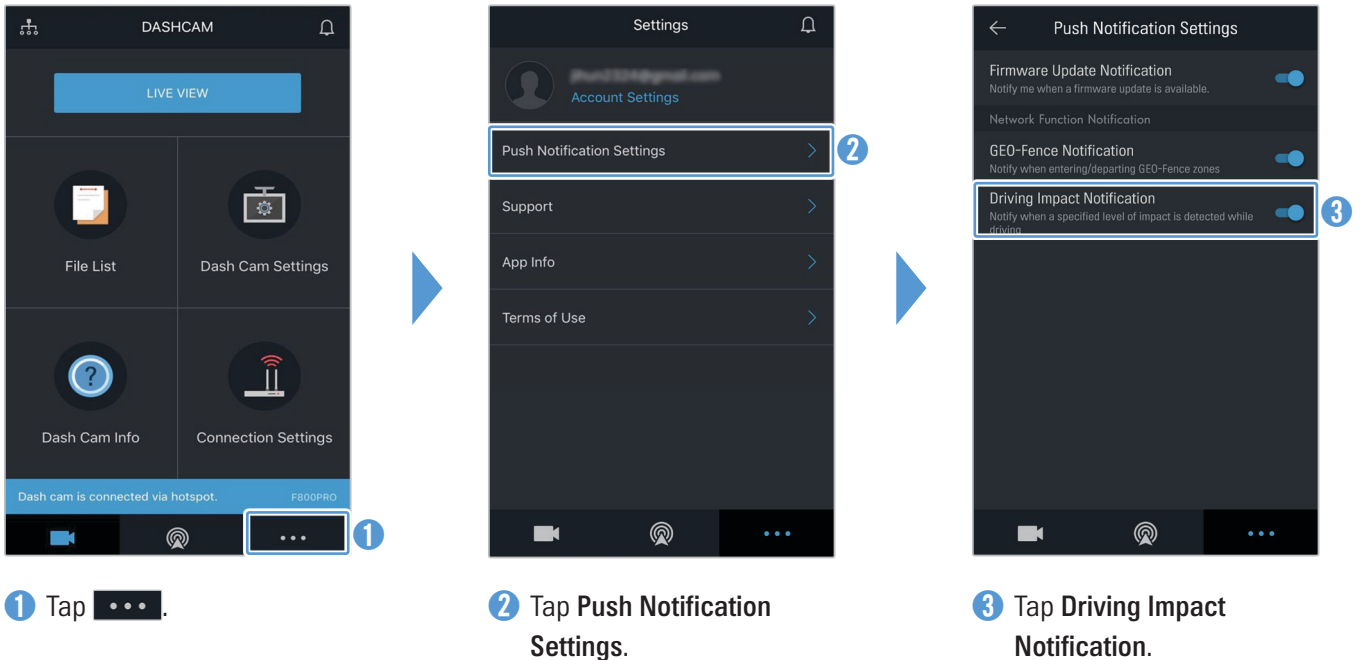
- 7 Tap .



- You can add up to a total of 20 geofenced zones. You can also delete geofenced zones by tapping **X** beside them. To start monitoring your geofenced zones, tap **Start Monitoring**.
- In the Notice section, you can select the following notice options.
  - **Entrance**: Sends a notification once the camera enters the selected geofenced zone.
  - **Departure**: Sends a notification once the camera leaves the selected geofenced zone.
  - **Entrance/Departure**: Sends a notification once the camera enters and leaves the selected geofenced zone.

## Using the driving impact notification feature

You can receive notifications if your vehicle receives impacts. Follow the instructions to turn on the driving impact notification.



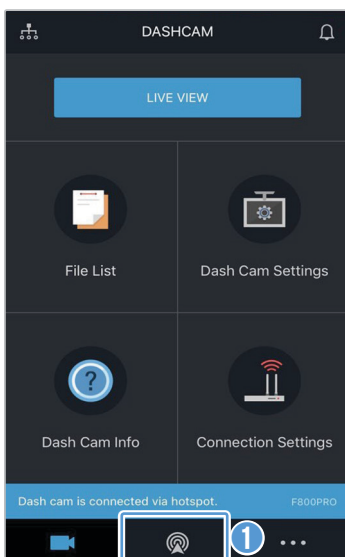


## Viewing driving impact videos on the cloud service

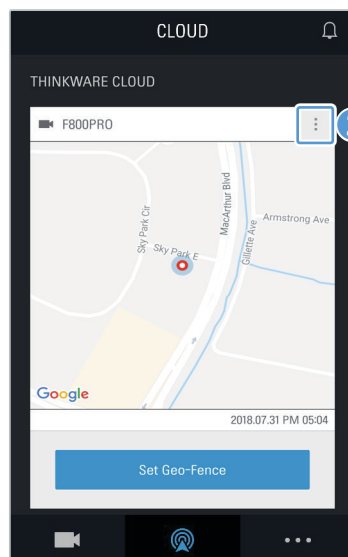
You can view driving impact videos uploaded on the cloud service if an impact is detected while driving. Follow the instructions to view the driving impact videos.



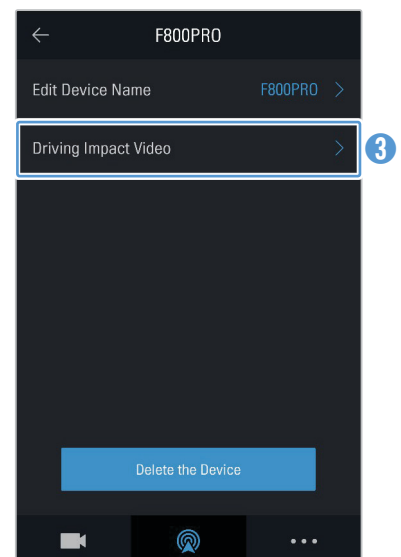
- You must turn on the network function to use the cloud service.
- The speed of upload and cloud service operation may vary depending on the status of your mobile network and the cloud server.



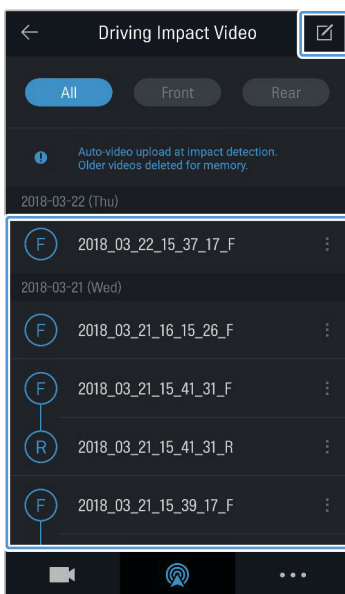
1 Tap .



2 Tap .



3 Tap **Driving Impact Video**.



4 Tap a driving impact video you wish to play.



- To download driving impact videos from the cloud server,
  - 1 Tap and select a video to download.
  - 2 Tap > **Download**. The downloaded video will be available in the **File List** menu.
- To delete driving impact videos from the cloud server,
  - 1 Tap and select a video to delete.
  - 2 Tap > **Yes/Delete**. The selected video will be deleted from the cloud server.

<http://www.thinkware.com>